

PURSE TOTES 2 & 3

by Sherry Titzer

<http://www.atimetostitch.com>

The text files provided with your set of designs lists the supplies you'll need to make the tote bags.

A separate PDF file with illustrations & instructions for constructing the actual tote bag is provided with your order.

I found the magnetic purse snap closures at JoAnn Fabrics. You can order online here: <http://www.joann.com/joann/> and type "magnetic purse snaps" in the search box. Or go to <http://www.google.com> and enter "magnetic purse snaps" in the search box to find other online sources.



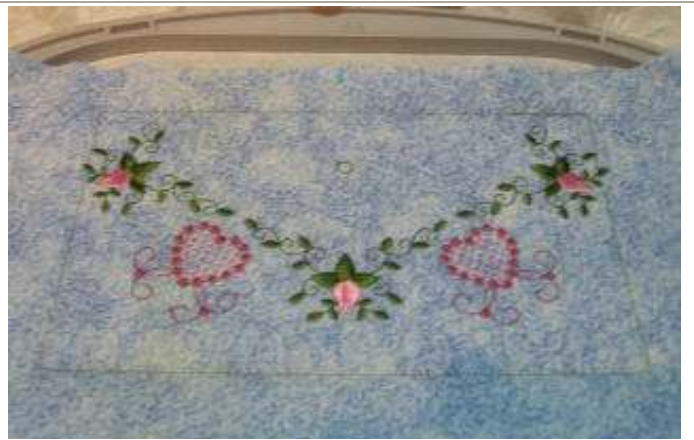
1. Making the front pocket. Hoop tear away stabilizer and stitch the first color stop which stitches a fabric placement line.



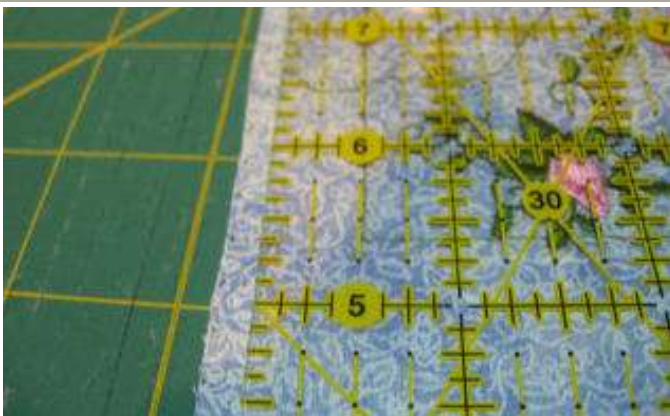
2. Spray your batting with temporary adhesive spray and then center the pocket fabric over the batting.



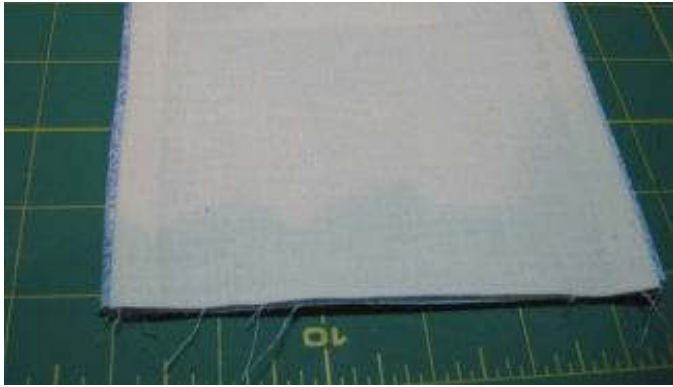
3. Fold fabric/batting in half lengthwise and place it in the hoop next to the placement line with fold centered with the stitched center mark. Unfold rest of fabric/batting, keeping even with the long basting stitch as well. This will ensure that the design centered lengthwise on the fabric.



4. The next color stop stitches a basting outline. Stitch the embroidery design by following the instructions provided with your designs. Note the tiny placement circle stitched above the center of design which is where the magnetic snap closure is added later.



5. Remove design from hoop and trim the pocket to size using the basting outline as your measuring guide. The trimming dimensions are included in the text file provided with your designs.



6. Add a piece of fusible interfacing centered 3/4" down from the top edge of lining fabric (wrong side) to support the magnetic snap closure. Next, trim the stabilizer close to the design on wrong side.



7. With right sides facing, stitch the lining & pocket fabric together along the top and bottom. Trim batting from seams, turn right side out & press. Keep seam even at bottom but let front edge roll towards the lining at top of pocket. Top stitch along both finished edges.



8. Center the flat washer (part of magnetic snap closure) over the tiny stitched placement circle and mark the slits on each side. Cut the slits open all the way through the fabric/lining at those marks.



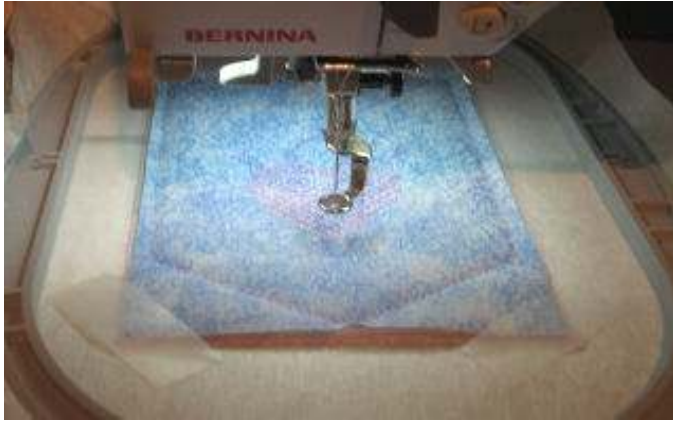
9. Take the fat half of the magnetic snap closure and push the metal tabs through the tiny slits.

10. Slip the washer over metal tabs and fold the tabs down until flat.



11. Now let's make the tab closure. Cut 2 pieces of fabric, 1 piece batting, 1 piece of fusible interfacing. Iron the interfacing to wrong side of one piece (this will be the lining fabric). Dimensions provided in text file with your designs.

12. Hoop cutaway stabilizer in your hoop. The first color stop stitches a placement outline. Place the fabric/batting centered inside the outline and tape in place.



13. Stitch embroidery design following the instructions in text file provided with your designs until the directions tell you to add the lining.
For the satin edge tab closures – At this point please follow the instructions in the text file because the directions for the satin edge tab is slightly different!

14. Add a 3" square of fusible interfacing to wrong side of lining fabric 3/4" from the bottom (to support magnetic closure). Measure 1 1/4" up from bottom and mark. Make a 2nd mark centered across the width of the fabric.



15. Center the flat washer (part of magnetic snap) over the center mark, trace the slits on each side. Cut slits open but do not add the other half of the magnetic closure just yet!

16. Center the prepared lining fabric inside the rectangle basting outline in the hoop (right sides of fabric facing) keeping bottom edge of fabric even with bottom of basting outline. Tape in place.



17. The next color stop tacks the lining down. Remove design from hoop, trim the excess fabric/batting/stabilizer along sides & bottom with pinking shears. Trim top edge with ruler & rotary cutter to keep it nice and straight.

18. Grab the thin half of the magnetic closure with needle nose pliers.



19. Slide the magnetic closure down between the two pieces of fabric and push the metal tabs up through the pre-cut slits in the lining.

20. Slip the metal washer over the metal tabs and fold over until flat.



21. Turn the tab closure right side out & press. Top stitch along finished edges. (You may need to use a zipper foot. This may be the only foot with room to top stitch without hitting the edge of the magnetic snap.

22. Place the tab closure centered over the pocket until the two halves of the magnetic closure snaps together to see how it looks!

To finish the purse tote, follow the illustrations and instructions in the the PDF file included with your order.